

The SRCplus project: Mobilizing short rotation coppice in Europe

15 February 2017

Final Workshop of the EU projects SRCplus and SUCELLOG

Dominik Rutz
Juan-Manuel Ugalde



Project Idea



Promote the cultivation of SRC
in Europe to provide energy



„Coppice“



Traditional/ old
method

New/modern
method:
Short Rotation
Coppice (SRC)

→ new growth from the stump or roots of trees if cut down

General SRCplus Idea

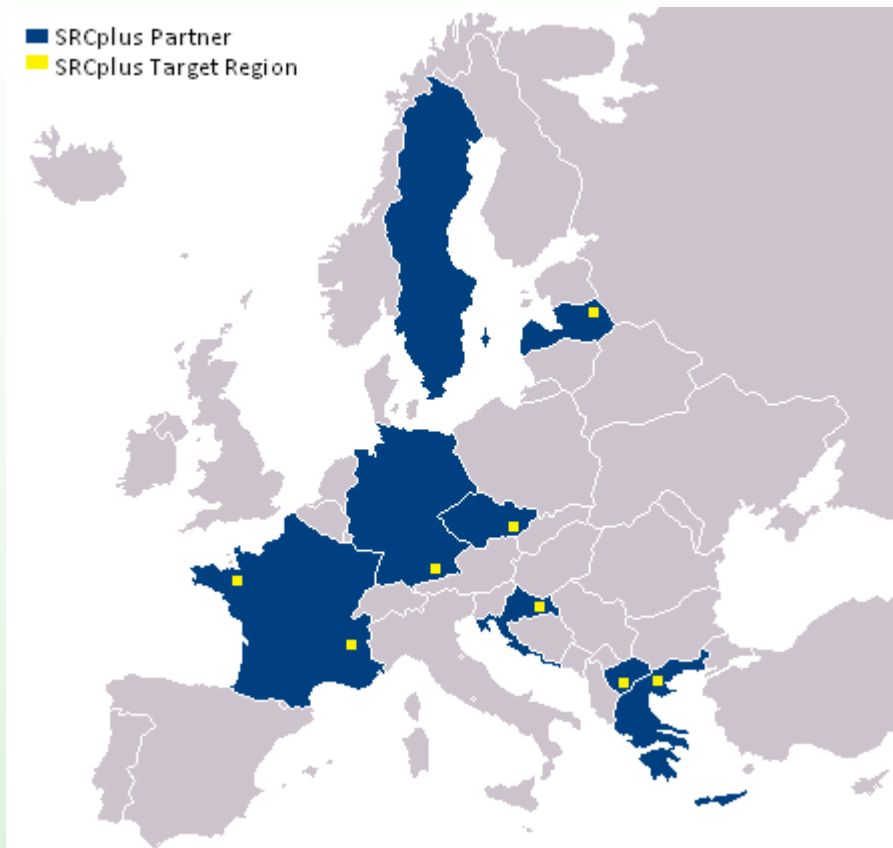
- Create **SYNERGIES** between bioenergy, **ecosystem services** and **nature conservation** measures
- and not conflicts!

Ecosystem services : beekeeping, water management, water supply (ground water), hunting, fire protection

Nature conservation: biodiversity, water purification, carbon content of soil, prevention of soil erosion, aesthetic landscape element



Target countries, regions, partners



- Upper Bavaria region/Achental (**Germany**)
- Eastern Croatia (**Croatia**)
- Vidzeme (**Latvia**)
- Rhone-Alps (**France**)
- Brittany (**France**)
- Zlin (**Czech Republic**)
- Kentriki Makedonia (**Greece**)
- Prespa (**Macedonia**)

- Sweden



Objective

- Promotion of sustainable SRC cultivation
- Increase the knowledge and awareness of
 - farmers
 - public land owners
 - woodchip users

Main barriers

- Fixed land use of > 20 years
- Large investments in the 1st year
- Lack of harvesting machines (chicken or egg probl.)
- Land classification issues
- Low subsidies (greening/ direct payments)
- Woodchip markets (competition with oil price)
- Sustainability concerns

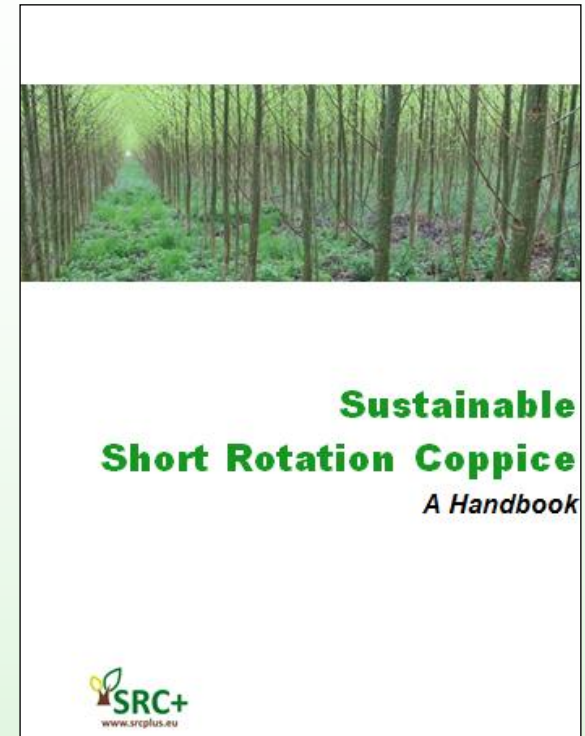
Actions

- ✓ Capacity building events
- ✓ Knowledge transfer
- ✓ Regional mobilization actions
- ✓ Cooperation activities with industry
- ✓ Show cases of good practise examples



SRCplus Handbook

- ✓ Languages:
English, Croatian, Czech, French,
German, Greek, Latvian, Macedonian
- ✓ Available at: www.srcplus.eu



Short Rotation Woody Crops (SRC) plantations for local supply chains and heat use

Project No: IEE/13/574



***Sustainability criteria
and recommendations
for short rotation woody crops***

WP 2 –D 2.3

November 2014

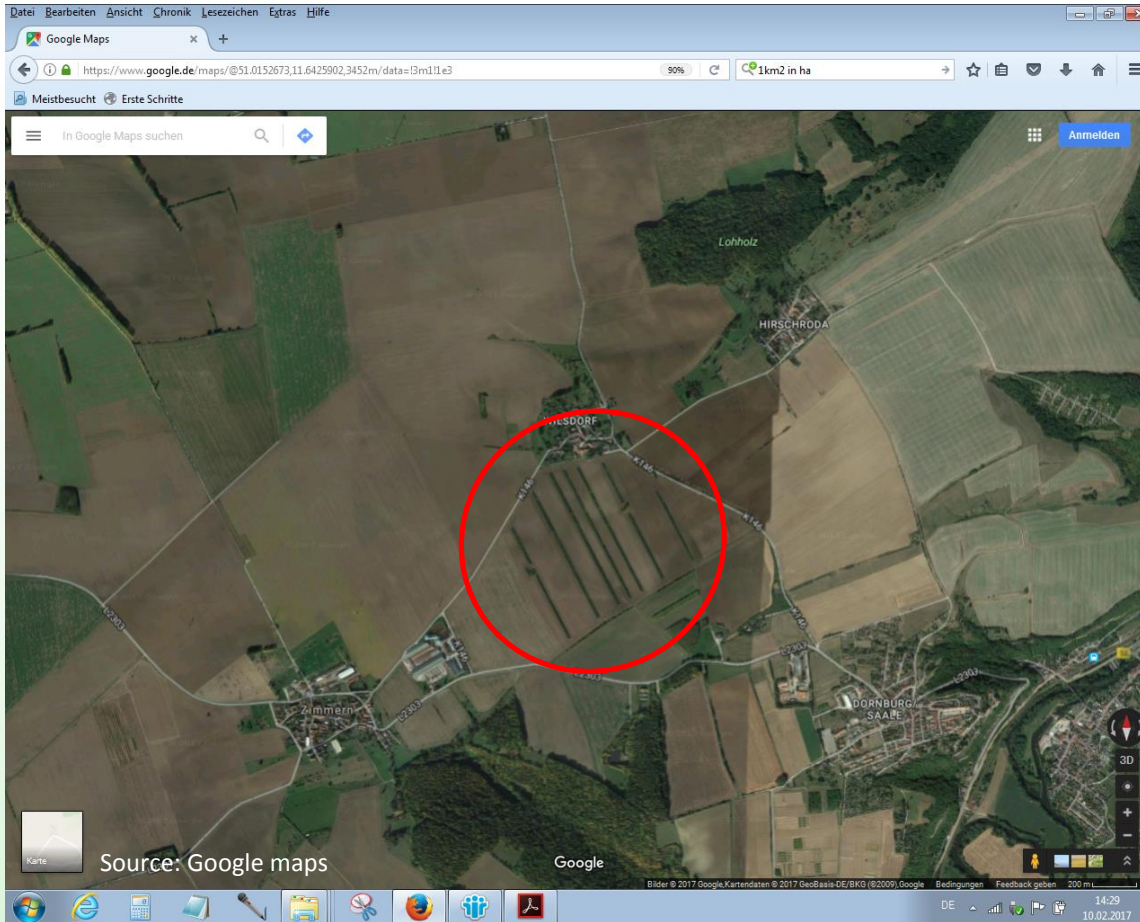


Details under:

<http://www.srcplus.eu/en/publications.html>

Criterion	Agricultural land	Grassland	Forest
Use of pesticides	During set-up and removal phases similar to conventional agricultural land use; During the short rotation phase not needed.	During set-up and removal phases similar to conventional grassland; During the short rotation phase not needed.	Higher
Use of fertilizers	Considerably lower	Considerably lower	Higher
Soil erosion	Considerably lower	During set-up and removal phases higher than grassland; During the short rotation phase similar to grassland.	Slightly higher
Biodiversity	Usually much higher than in intensively used agricultural land; On extensively used agricultural land it can be higher or lower.	Depends on the intensity of the used grassland as well as on species composition.	Depends on the forest type and the design of the SRC; Compared to natural forests, biodiversity in SRC is rather lower.
Climate and water	Higher evaporation, higher interception, higher wind protection and temperature balancing, reduction of dust and pollutants	Higher evaporation, higher wind protection and temperature balancing	Rather negative impacts
Carbon sequestration	Considerably higher	Higher or equal; depends on management practices.	CO ₂ storage considerably lower, but annual sequestration higher

Example: Agroforestry



Example: Dornburg, Germany, 51 ha

Compared to common agricultural crop cultivation, SRC:

- Reduces soil erosion
- Improves soil properties
- Increases yields
- Diversifies income
- Etc.

→ joint food, feed and fuel production is possible!

Example: Agroforestry



Example: Dornburg, Germany, 51 ha

Compared to common agricultural crop cultivation:

- Reduces soil erosion
- Improves soil properties
- Increases yields
- Diversifies income
- Etc.

→ joint food, feed and fuel production is possible!





100 (!) ha plot near Senftenberg, Germany







Thank you for your attention!

Dominik.Rutz@wip-munich.de

Juan-Manuel.Ugalde@wip-munich.de

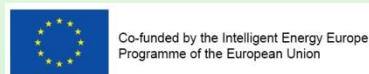
www.wip-munich.de



www.srcplus.eu

 <https://www.facebook.com/groups/716265301749562/>

 <https://twitter.com/srcplus2014>



The sole responsibility for the content of this presentation lies with the authors. It does not necessarily reflect the opinion of the European Union. Neither the EACI nor the European Commission are responsible for any use that may be made of the information contained therein.