

# Multiplying the SRC experiences in Vidzeme, Latvia

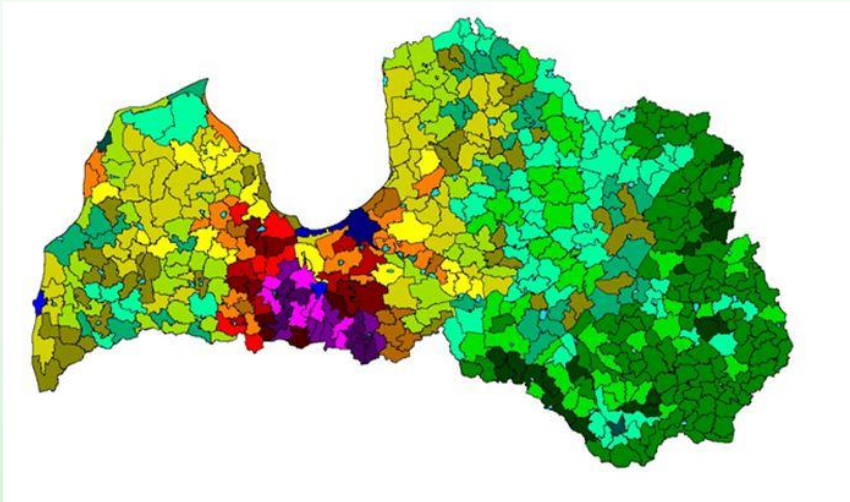
Aivars Žandeckis  
EKODOMA, Ltd

International Workshop  
Brussels, Belgium  
15<sup>th</sup> February 2017

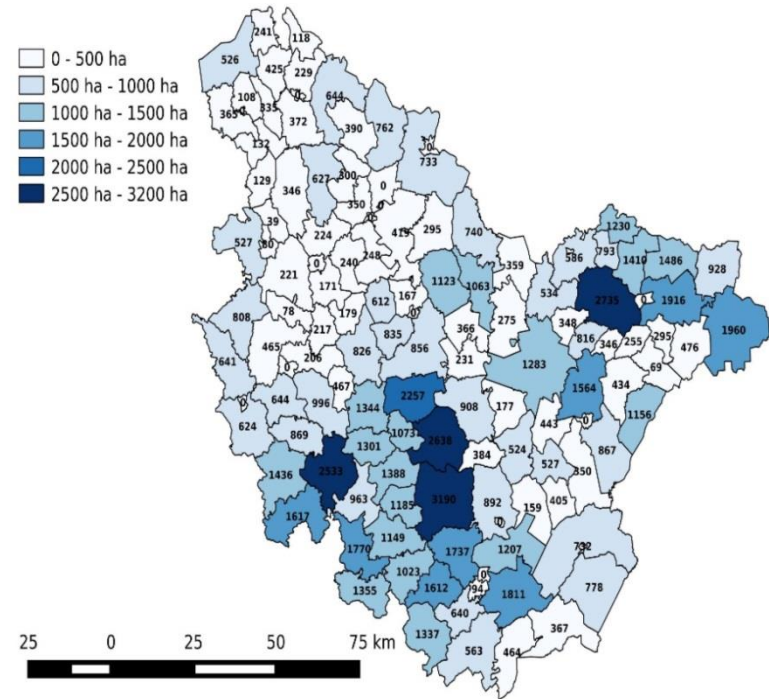
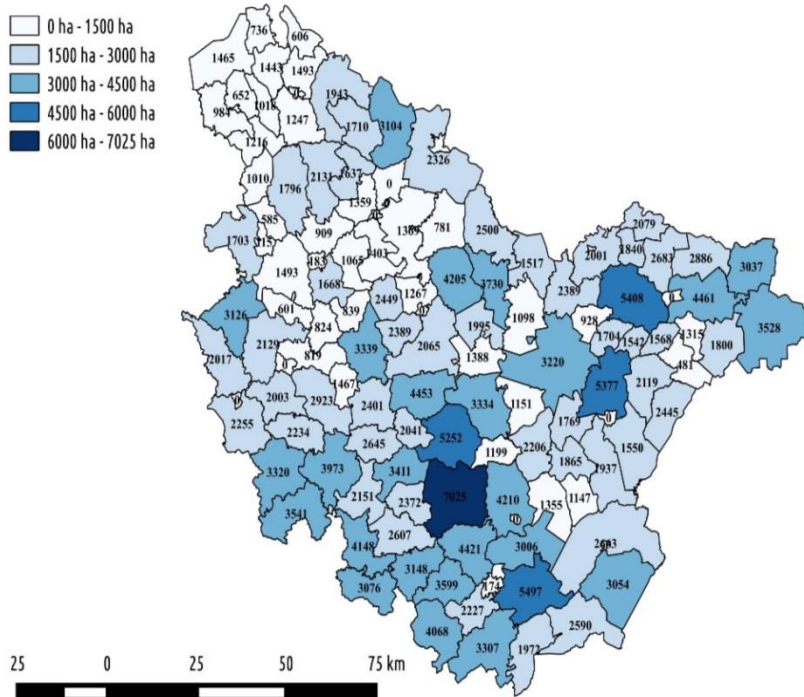
# Vidzeme region



- Area – 15245 km<sup>2</sup>
- Municipalities – 26
- Population - ~220K
- Population density – 14,4 inhab./km<sup>2</sup>



# Potential areas for SRC



**< 38 points**

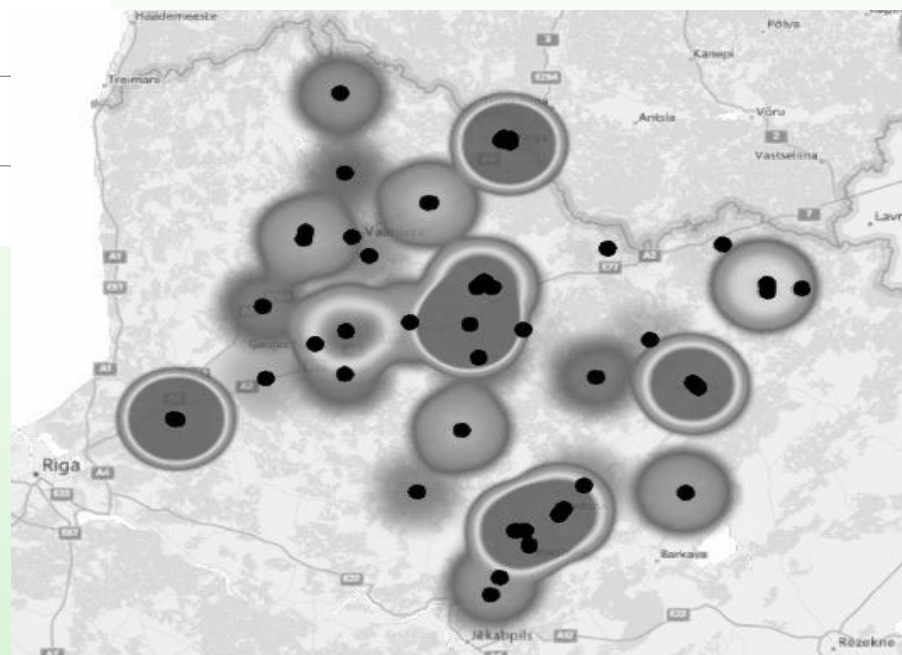
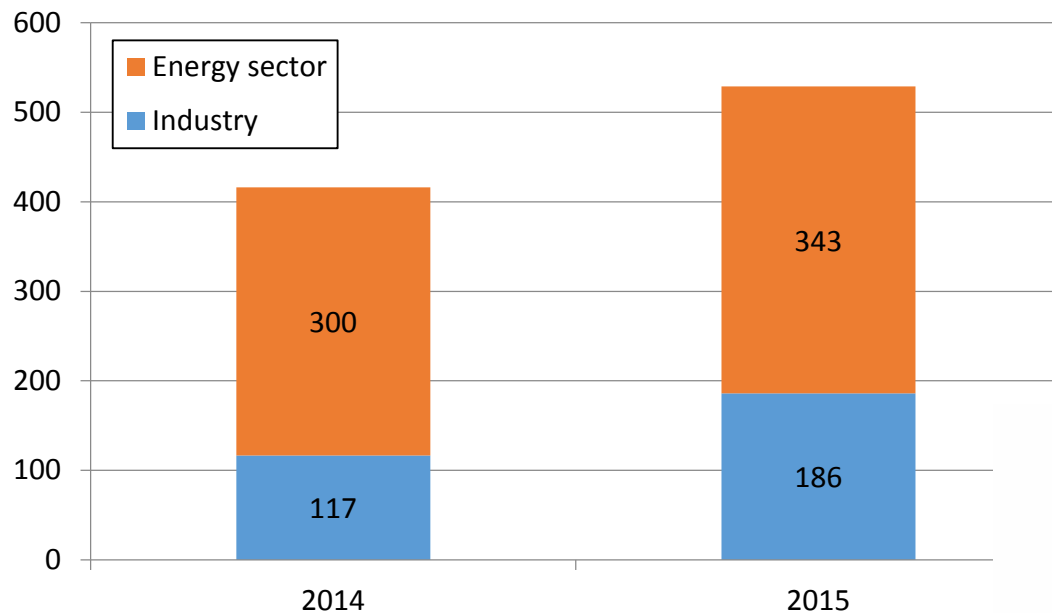
- 260 574 ha
- 52% of agricultural land

**< 25 points**

- 87 899 ha
- 18% of agricultural land

# Consumption of wood fuels in Vidzeme

Consumption of wood fuels [thsd. t/year]



Heat map: Makovskis K., Lazdina D. (2015) Potential areas of low productivity agriculture lands for SRC energy wood production in Vidzeme region. *Research For Rural Development*. LLU : Jelgava, pp.288-292 ISSN 1691-4031

Statistics: Latvian center of Environment, geology and meteorology, [http://parissrv.lvgmc.lv/#viewType=home\\_view](http://parissrv.lvgmc.lv/#viewType=home_view)

# SRC in Vidzeme region

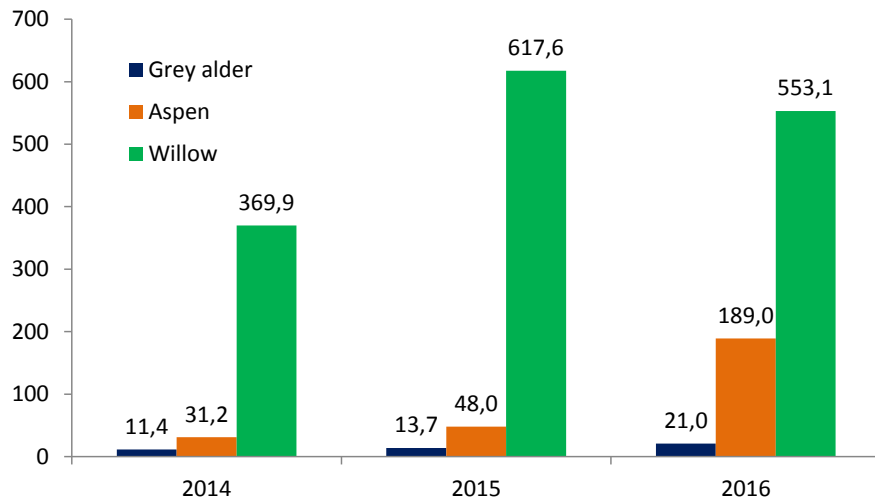
- There is no explicit registration of SRC plantations;
- Only available statistics - direct payment registration reports (areas applied for subsidies);
- Statistics available could underestimate current size of SRC in Latvia.



# SRC in Vidzeme region

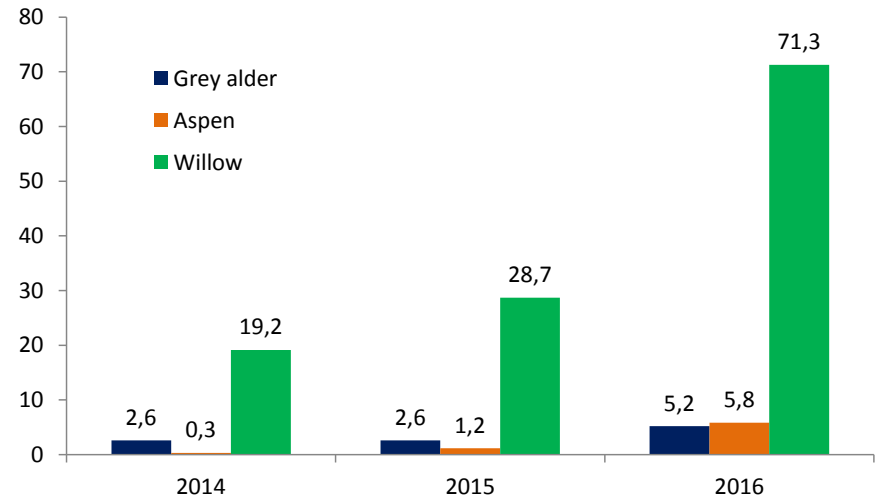
## Latvia

Areas subsidied in Latvia, ha



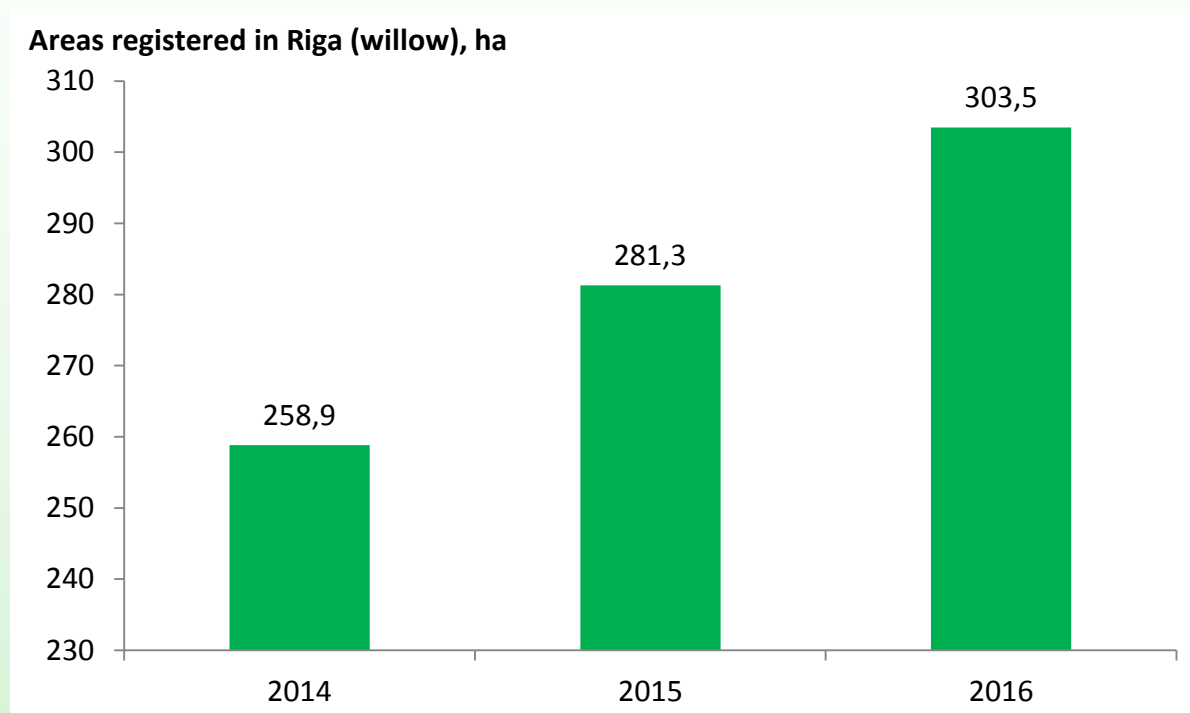
## Vidzeme region

Areas subsidied in Vidzeme, ha



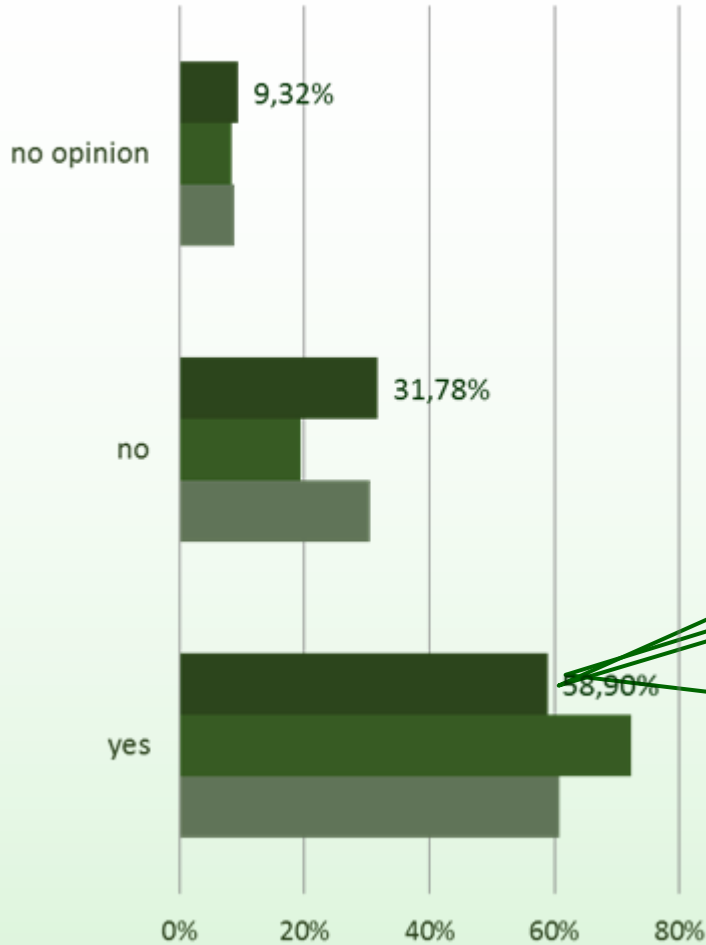
# SRC in Vidzeme region

- SRC areas subsidised are linked to the registered address of the companies and farms;
- Many SRC plantations are registered in Riga.

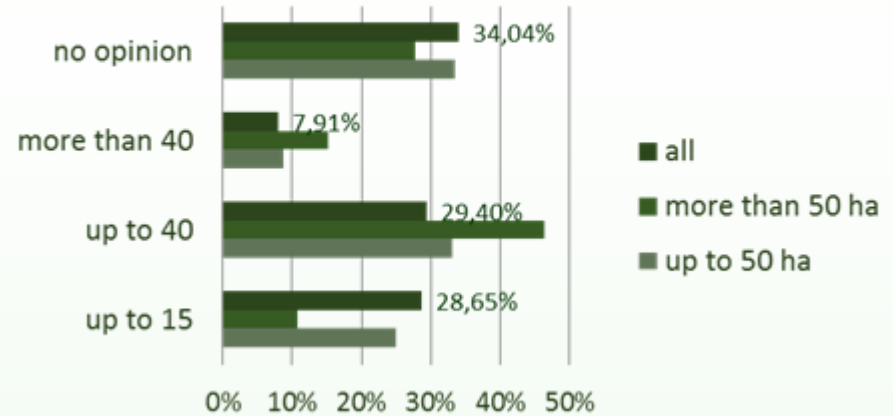


# Survey - Coppice forestry

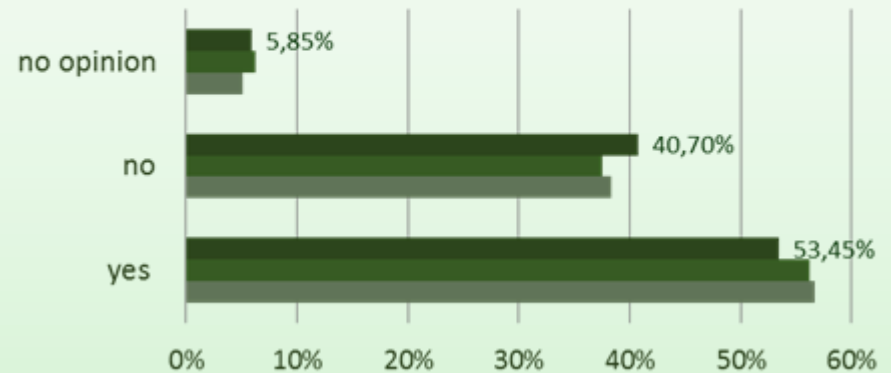
Do you practice coppice forestry?



Rotation period for grey alders and aspens ?



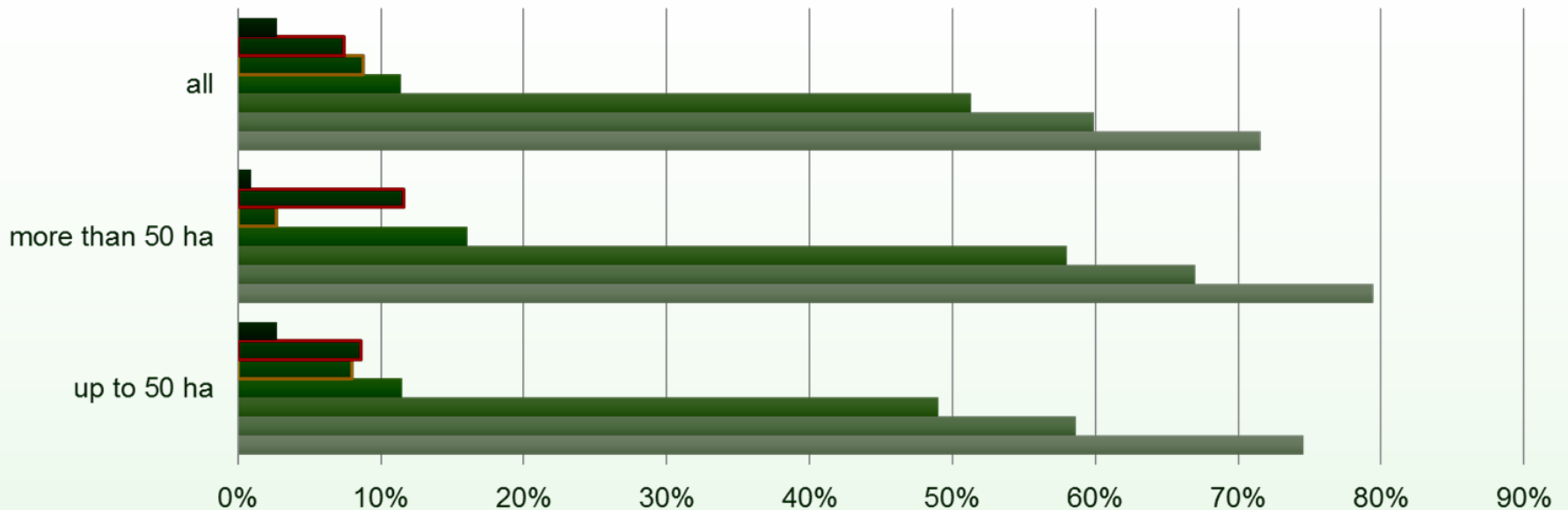
Do you use to plant conifers additionally to deciduos coppice?





# Survey - Coppice forestry

## Main species growing in coppice forests ?



	up to 50 ha	more than 50 ha	all
no opinion	2,71%	0,89%	2,72%
other	8,64%	11,61%	7,44%
Salix sp. (trees)	7,97%	2,68%	8,73%
Alnus glutinosa	11,53%	16,07%	11,43%
Alnus incana	48,98%	58,04%	51,30%
Populus sp.	58,64%	66,96%	59,93%
Betula sp.	74,58%	79,46%	71,54%

# SRC experience in Vidzeme

- Owner - private company, distributor of seedling material, full service company;
- SRC – only willows, 200 ha harvested in 2017;
- Mechanized planting – ~15000 cuttings/ha;
- Manual harvesting, collection by forvarder;
- Biomass yield: ~150m<sup>3</sup> of woodchips per ha;
- Usage: in 2016 – sold to biomass trader (supplied to local boiler house - 40 km), in 2017 – export/local use (80 km, port).



Aivars Žandeckis  
[aivars.zandeckis@ekodoma.lv](mailto:aivars.zandeckis@ekodoma.lv)  
+ 371 67323212  
+371 22334510



Co-funded by the Intelligent Energy Europe  
Programme of the European Union

*The sole responsibility for the content of this presentation lies with the authors. It does not necessarily reflect the opinion of the European Union. Neither the EACI nor the European Commission are responsible for any use that may be made of the information contained therein.*